



**BH 1920**

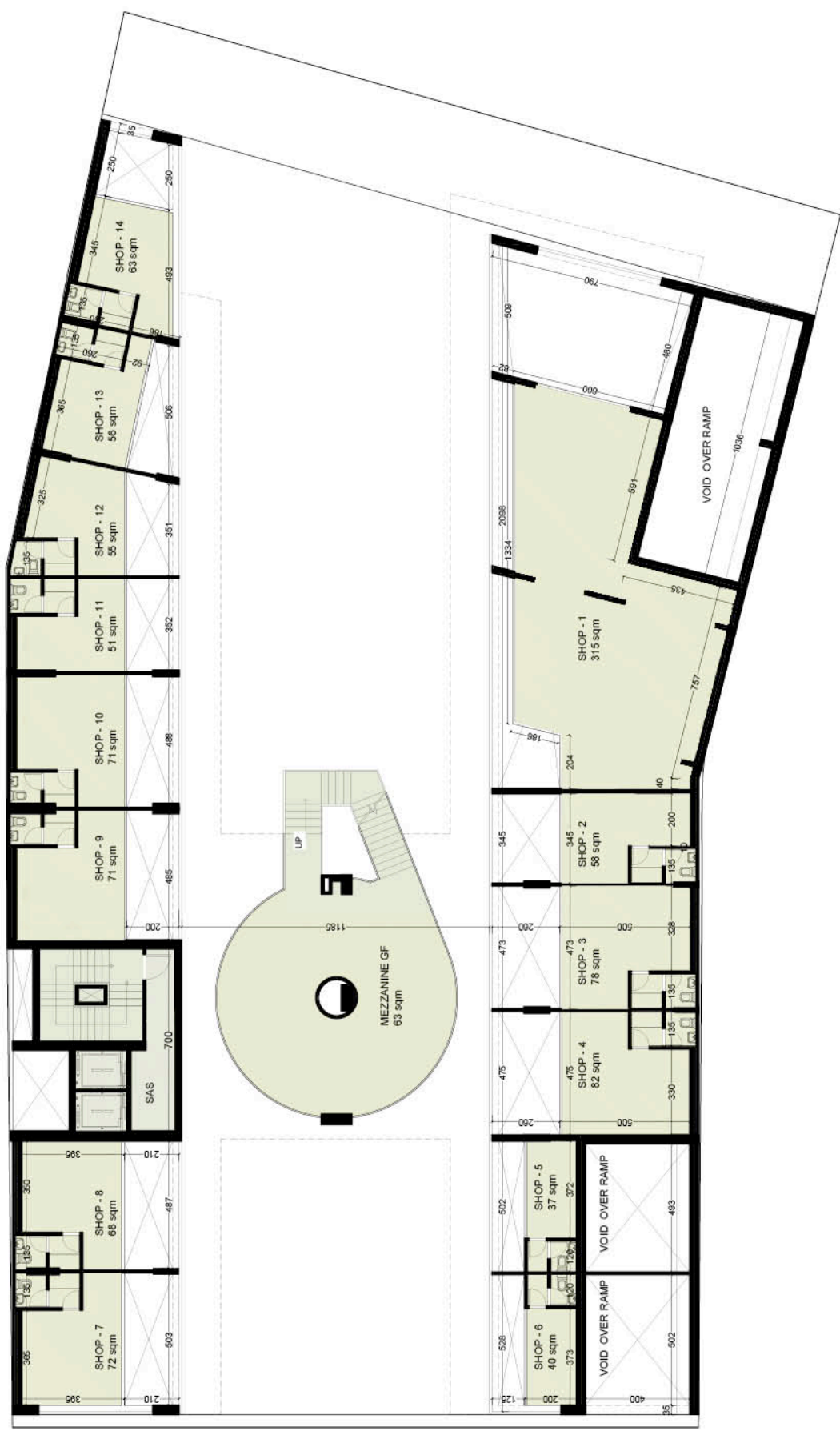
Comfortably Modern!

# WHERE DREAMS & REALITY MEET!

Located strategically in one of the most central business hubs in the country, **BH1920** is the new "comfortably modern" real estate project that every entrepreneur is looking for. Enjoying a well-connected area in Bourj Hammoud, the project offers ideally based shops and offices for rental and sale. With the highest finishing quality on the market, the most modern design equipped with unique features, a high safety and security system, and a parking access control system, your dream space is finally real!



**1st FLOOR**  
**MEZZANINE LEVEL**



**GROUND FLOOR**  
**MEZZANINE LEVEL**

# MATERIAL & FINISHING SPECIFICATIONS

## Interior Finishing

Satin finish acrylic paint or all paint for all walls.  
Italian marble flooring for the entrance and lobby stairs.

## Exterior Finishing

Decorative stamped concrete with lighting and flower beds for all common areas in the ground floor level.  
Tempered glazing for stores.  
Aluminum composite metal panels.  
Tempered laminated glass balustrade and aluminum railing.



## Electrical Finishing

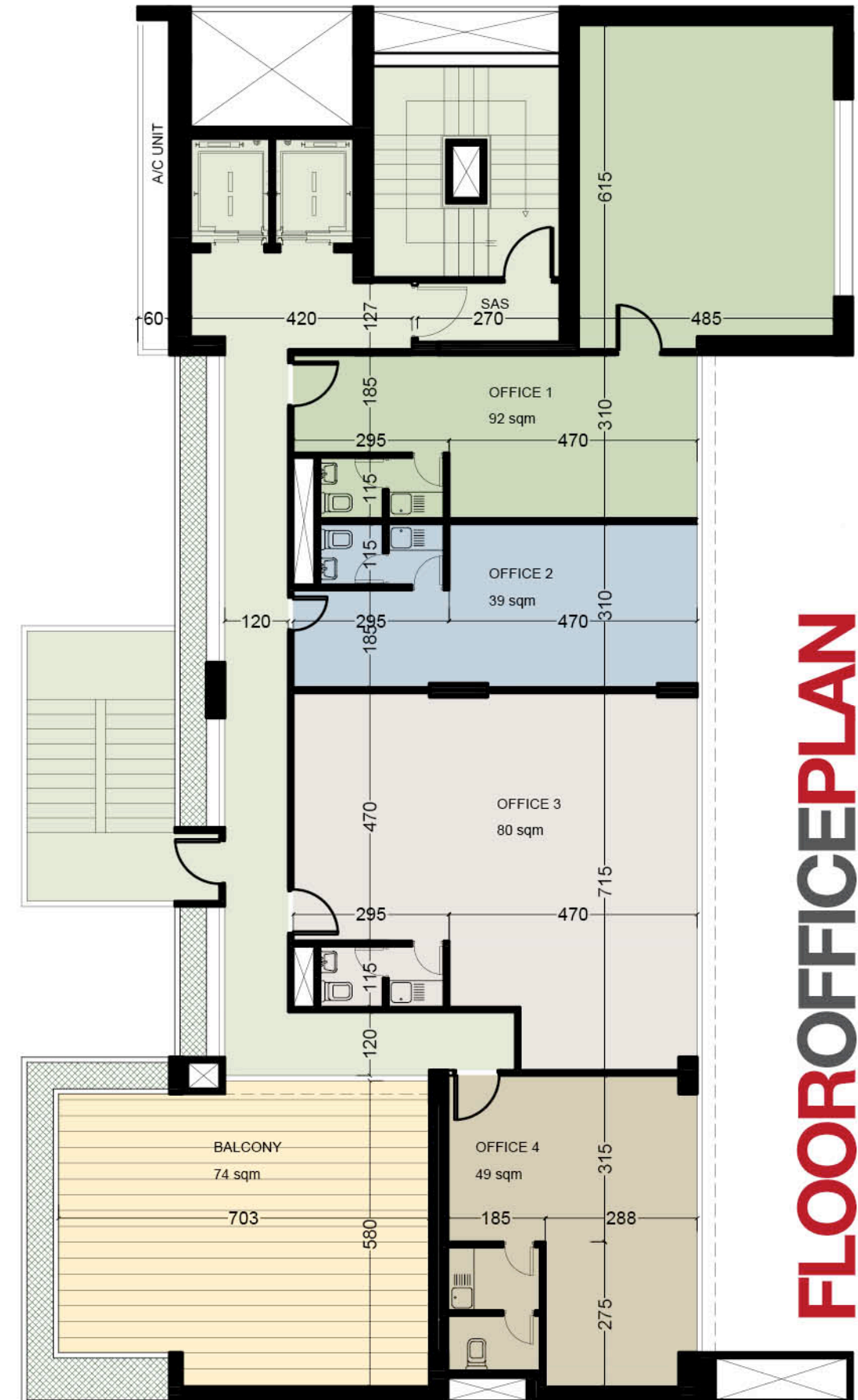
Electrical cables by "Cables du Liban".  
Electrical fixtures by LeGrand, Bticino, Vimar, or equivalent.  
Electrical circuit breakers by "Merlin-Gerin", ABB, or equivalent.  
Lighting management system in common areas.

## Mechanical Finishing

Reservations for split air conditioning units for each units (office/shop)  
European made sanitary pipes.  
Polypropylene water piping by "API" or equivalent.  
Sanitary fixtures and mixers by European brands.

## Added Features

Anti-Seismic design.  
Fire safety and fire alarms.  
VVF elevators by Otis, Kone, or equivalent.  
Two synchronized generators.  
IP CCTV system security feature.  
Parking access control system.  
Ventilated underground parking.  
Emergency backup lighting in common areas and parking.





All our shops and offices are built with high-quality local and European construction brands and designed in a trendy way to offer our customers a safe and relaxing work environment. Our indoor lighting management system is enhanced by the natural light allowed in through the big glass windows favored by the project's architecture.

**THE MOST  
ACCESSIBLE  
LOCATION  
THE CITY  
HAS TO OFFER**



WHERE **BUSINESS** AND  
**LUXURY** MERGES!



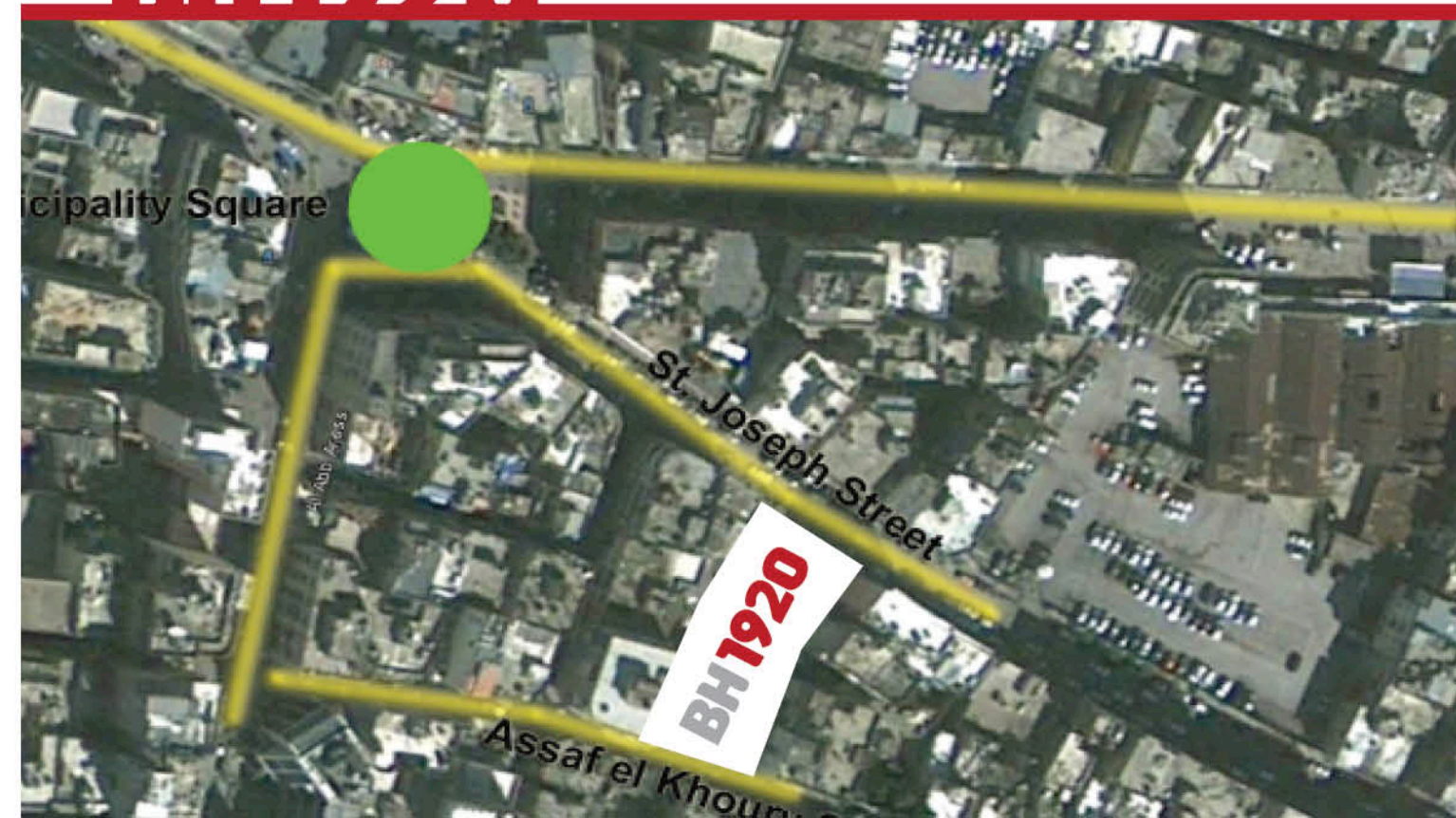
20  
19  
20  
19  
20  
19

# THE PERFECT BUSINESS ENVIRONMENT



Located in the North-East of Beirut, Bourj Hammoud is known to be an industrious area densely populated with stores, restaurants and businesses. Connecting Eastern and Western Beirut, the city is very easily accessible, attracting workers and visitors from all over the region. Proudly located there, **BH1920** is happy to provide its customers with the many benefits this commercial hub has to offer.

## BH1920





**COMFORTABLY  
MODERN!**



**BH1920**





Jdeideh El Matn, Nasrallah Building  
T. +961 1 88 55 30 - M. 79 12 61 60 - [info@bh1920.com](mailto:info@bh1920.com)  
[www.ademco-lb.com](http://www.ademco-lb.com)