

# KASLIK 793



A new project by Nasrallah Group, located in the heart of the touristic area of Kaslik; it benefits from the proximity of several touristic and commercial centers; such as Samaya, Solemar, Portemilio hotel and resort, etc...

The project is accessible from:

- Jounieh, coastal road
- Kaslik commercial zone
- The coastal road from Dbayeh to Jounieh

SENSES

MOCEAN

CYAN

SAMAYA

WE ARE HERE

SOLEMAR

BURGER KING

KASLIK UNIVERSITY

USEK

Kaslik

Jounieh

Sahel Alma

Sarba

**ADEMCO**  
DEVELOPMENT & MANAGEMENT  
00961 1 879 984  
00961 3 610 332

**GHANIMEH REAL ESTATES**  
Sales and Marketing  
00961 3 627 334  
00961 9 216 766

FINANCED BY:

**BANQUE LIBANO-FRANÇAISE**  
A partner for your ambitions

**MR GROUP ARCHITECT:**  
**NADI NAMMAR**  
961 9 220758 961 3 103393 mrgroup@mrgroup-architects.com

DESIGNED BY: **inhouse** communications  
www.inhousecommunications.me

# KASLIK 793

## 5- Added Features:

- Anti-Seismic design in accordance with American code for zone 2B.
- VVF elevators by Otis, Kone, or equivalent.
- Two synchronized generators for the project.
- Double layer waterproofing SBS membrane for all terraces, balconies and bathrooms.
- Remote controlled underground parking gate.

## Disclaimer:

The details contained in this list are intended to give a general indication of the proposed development. We reserve the right to amend any part of the development at any time without any responsibility whatsoever in respect.

## Kaslik 793:

### Material and finishing Specifications:

#### 1- Exterior Finishing:

- Aluminum composite metal sheets or equivalent.
- Double glazing aluminum by "Technal".
- Tempered laminated glass balustrade and aluminum railing.

#### 2- Interior Finishing:

- Italian marble flooring, or equivalent, for the entrance and stair lobby.
- First choice ceramic tiles flooring for the shops and offices.
- Satin finish acrylic paint or oil paint to all.
- All interior doors made of M.D.F. with oak veneer or equivalent.
- Gypsum board false ceilings for the main entrance and stair lobby.

#### 3-Electrical Finishing:

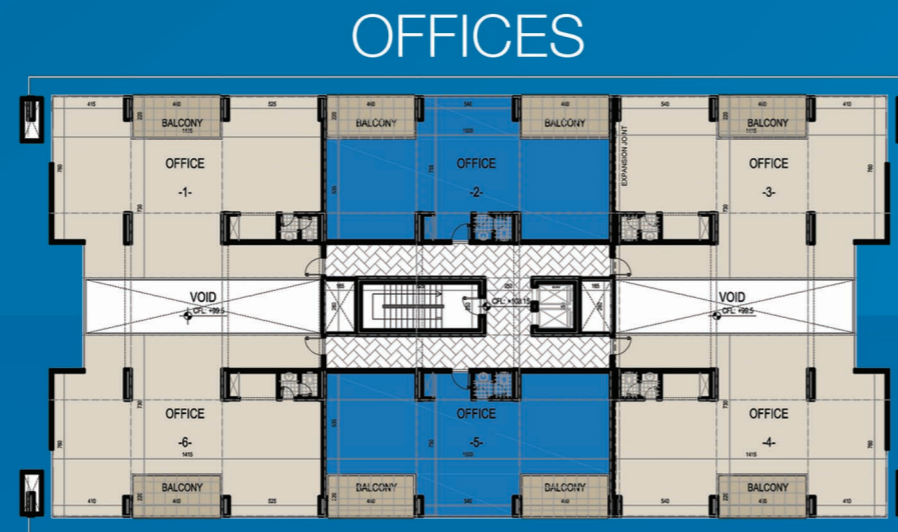
- Electrical cables by "Cables du Liban".
- Electrical fixtures by LeGrand, bticino or equivalent.
- Electrical circuit breakers by "Merlin-Gerin".
- Network wiring for each office.

#### 4- Mechanical Finishing:

- Reservation for split units air conditioning for each office.
- European made sanitary pipes.
- Polypropylene water piping by "API" or equivalent.
- Sanitary fixtures by "Duravit" or equivalent.
- Sanitary mixers by "Grohe" or equivalent.



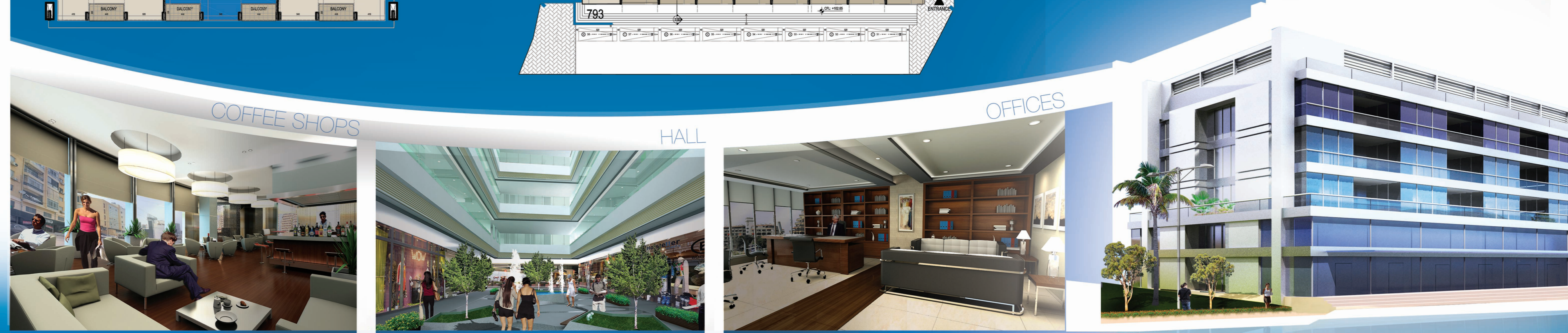
SHOPS



OFFICES



SHOPS



COFFEE SHOPS

HALL

OFFICES

**Kaslik 793** consists of 10 shops facing the coastal road from Dbayeh to Jounieh and 20 shops facing Samaya; in addition to 3 floors of offices well sunny with a good view of sea and mountain. The retail space is laid out on the 1st two levels with 3 levels of office space on the main two roads; the offices floor range between 150m<sup>2</sup> and 212m<sup>2</sup>, and the shop between 60m<sup>2</sup> and 176m<sup>2</sup>.